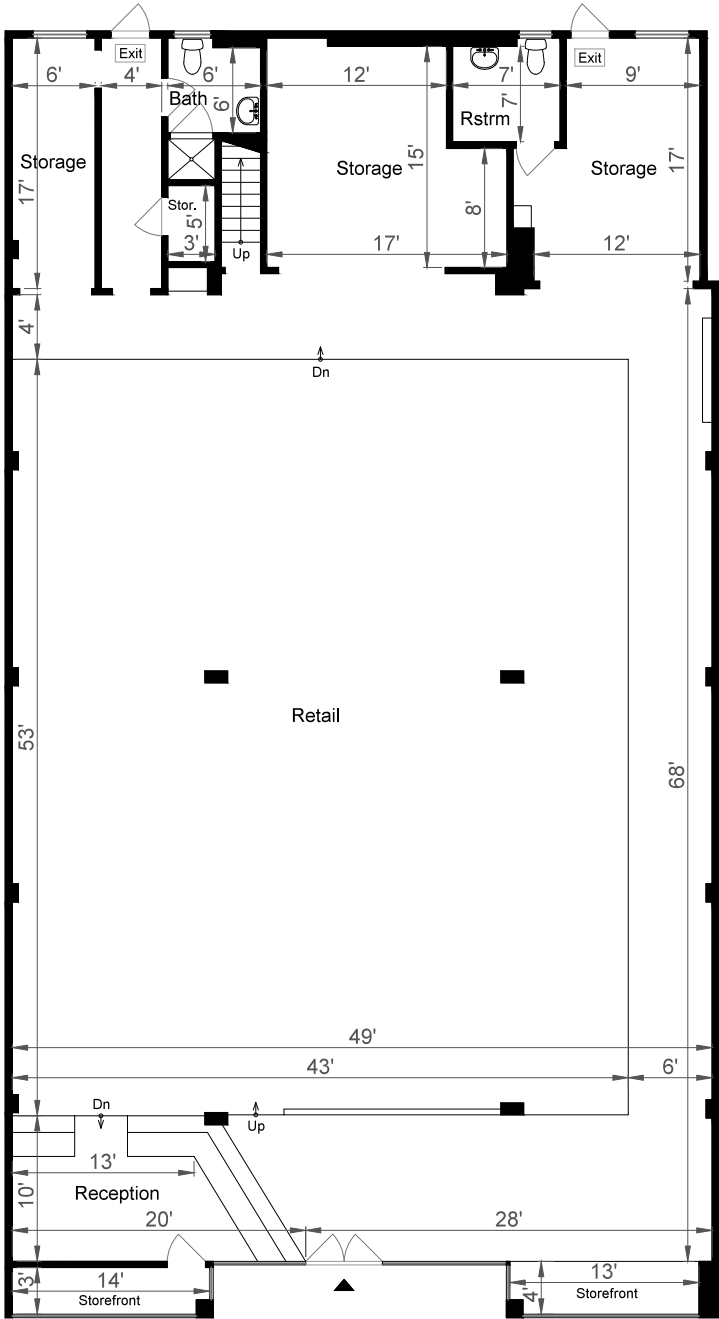
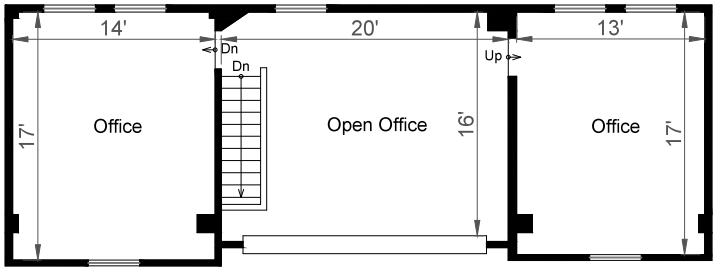


2636 BROADWAY STREET | REDWOOD CITY, CA 94063



FIRST FLOOR
4,415 SQ FT



SECOND FLOOR
865 SQ FT

Estimated Total Square Footage: 5,280 SQ FT
Calculated from outside surface of perimeter enclosure.



Rendering by Floor Plan Visuals.
All measurements are approximate. While deemed reliable, no information on these floor plans should be relied upon without independent verification.